



Monitoring Your Windows Server® 2008 Infrastructure

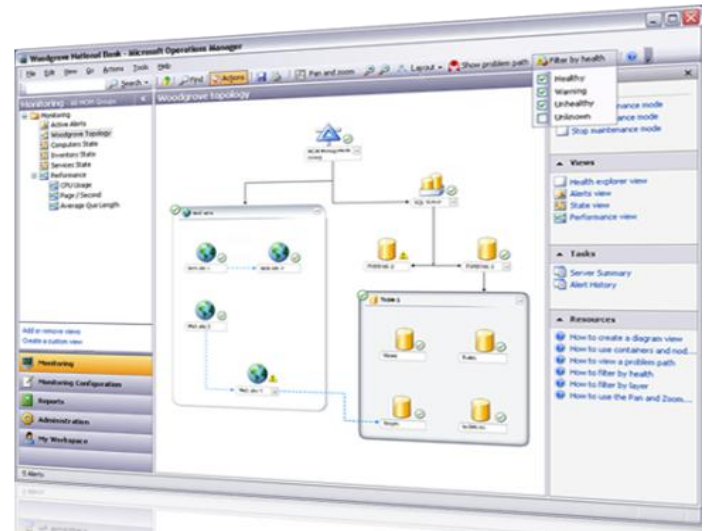
Assuring Server Health & Performance with Microsoft® System Center Operations Manager 2007

As organizations deploy Windows Server 2008 across their infrastructure, knowing that those servers are healthy and performing as expected will be a fundamental requirement. Who better to provide this knowledge and capability than Microsoft?

Microsoft System Center Operations Manager 2007 delivers best-of-breed, end-to-end monitoring and management of your Microsoft Windows infrastructure. Encapsulating in-depth knowledge gathered from the creators of Windows Server 2008 and its key features into Operations Manager 2007, alongside the other information and capabilities Operations Manager 2007 provides, organizations can rest assured that they can easily monitor their Windows Server 2008 infrastructure alongside their existing IT environment—all from a single console.

Benefits

- Improves service levels and visibility with end-to-end service management of Microsoft and custom line-of-business applications.
- Enables Operations and IT Management teams to more-easily identify and resolve issues affecting the health of distributed IT services.
- Accelerates incident resolution through expert server, client and application knowledge for Windows.
- Lowers client support costs by integrating and extending problem reporting and operations monitoring to client systems.
- Delivers a role-based architecture to securely scale management responsibility across teams and infrastructure.
- Reduces IT management complexity by automating routine administration



Core Capabilities

End-to-End Service Management

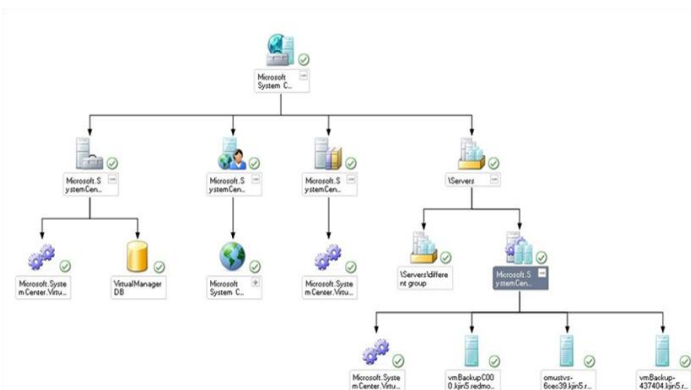
System Center Operations Manager 2007 delivers monitoring at the level of the IT service, allowing operators to quickly validate that your IT services are available and performing as expected. By determining relationships between the components that together deliver your IT services, as well as being able to simulate end-user transactions, you can be assured that any incident or anomaly is quickly identified, investigated and resolved, improving your overall service levels.

Best of Breed for Windows

System Center Operations Manager 2007 delivers in-depth expertise and knowledge gathered from the Microsoft Server, Client and Application teams. Provides you the assurance you need to successfully manage your Windows Server 2008 servers alongside your other IT infrastructure.

Increased Efficiency and Control

System Center Operations Manager 2007 automates routine, redundant tasks, providing intelligent reporting and monitoring that reduces the level of manual effort that traditional monitoring approaches require.



Operations Management Packs for Windows Server 2008

Management Packs are the building blocks which extend the management capabilities of System Center Operations Manager 2007 to assuring the health and performance of operating systems, applications, and other technologies across your infrastructure.

The Operations Management Packs for Windows Server 2008 Management Pack will deliver in-depth health reports with an included knowledgebase that provides detailed information about health status issues and alerts. Windows Server administrators can then get an enterprise-wide view of the health, performance, and stability of all of their managed servers from a single console. The Operations Management Packs for monitoring your Windows Server 2008 infrastructure include*:

- Windows Server 2008 Base Operating System
- Network Access Protection (NAP)
- Microsoft Cluster Services (MSCS)
- Domain Name Service (DNS)
- Dynamic Host Configuration Protocol (DHCP)
- Internet Information Services (IIS)
- Group Policy
- Active Directory (AD)
- Active Directory Federation Services (ADFS)
- AD Lightweight Directory Services (ADAM)
- Application Server
- Windows Server Services for Unix
- Routing and Remote Access Service (RRAS)
- Terminal Services (TS)
- Network Load Balancing (NLB)
- Network Policy Service (NPS)
- Windows Rights Management Services (RMS)
- Windows Deployment Services
- Streaming Media Services
- Certificate Services
- Hyper-V
- Fax Server
- Print Server

* Availability of Management Packs for Windows Server 2008 is targeted to start in the second quarter of calendar year 2008.

For Further Information

System Center Operations Manager 2007

For the latest information on System Center Operations Manager 2007, including how System Center Operations Manager 2007 helps manage your IT environment and key workloads, as well as information on Service Pack 1†.

<http://www.microsoft.com/systemcenter/opsmgr/>

System Center Pack Catalog

The catalog contains the latest Management Packs and Connectors for System Center Operations Manager 2007 and the other System Center products (where applicable)

<http://www.microsoft.com/technet/prodtechnol/scp/catalog.aspx>

System Center Home

<http://www.microsoft.com/systemcenter/>

Windows Server 2008 Home

<http://www.microsoft.com/windowsserver2008>

Microsoft®
System Center
Operations Manager 2007



† Service Pack 1 is expected to become available for public download at the end of February 2008.



© 2008 Microsoft Corporation. All rights reserved. The information contained in this document represents the current view of Microsoft Corporation on the issues discussed as of the date of publication. Because Microsoft must respond to changing market conditions, it should not be interpreted to be a commitment on the part of Microsoft, and Microsoft cannot guarantee the accuracy of any information presented after the date of publication. The information represents the product at the time this document was printed and should be used for planning purposes only. Information subject to change at any time without prior notice. This data sheet is for informational purposes only. MICROSOFT MAKES NO WARRANTIES, EXPRESS OR IMPLIED, IN THIS SUMMARY.

Microsoft, Active Directory, Windows, the Windows logo, and Windows Server System are either registered trademarks or trademarks of Microsoft Corporation in the United States and/or other countries.

Microsoft®
System Center
Knowledge-Driven IT Management